

# JOIN US!

*Proclaimed in 1913 through private efforts, the Lincoln Highway pulled America out of the mud of the 19th century. It connected Times Square through fourteen states to San Francisco's Lincoln Park...and it changed our country forever!*

It all began on July 1, 1913 when a group of American industrialists envisioned a "continuous improved highway from the Atlantic to the Pacific, open to lawful traffic of all description, without toll charges, and to be a lasting memorial to Abraham Lincoln."

By September that year, the announcement was made that the route was to be 3,389 miles long. Existing roadbeds were chosen, along with new sections to be built by local supporters and governments to complete the path. One year later a "seedling" mile was made of concrete in Malta, Illinois, to demonstrate the future of the road. Several realignments later (made primarily to eliminate dangerous railroad grade crossings, not just to shorten the route), the highway was considered complete. The association dissolved, having completed its work. In 1928 the Lincoln Highway was marked by concrete posts set by the Boy Scouts across America.

Then in 1992 in Ogden, Iowa, a meeting was held to reactivate the association for historic preservation and tourism.

A national headquarters was established in Franklin Grove, Illinois, in 1996.



A monument of Bucyrus, Ohio honors John Hopley, Ohio State Consul. It is comprised of stones from throughout the world. —Photo by J. Cassler



## HELP PRESERVE THE EXPERIENCE...

There is a lot to see and do along the Lincoln Highway. Many sections of this historic road ramble through small scenic towns that thrived during its heyday. Now these places hold history in their clutch: brick sections of road, memorials to Lincoln and the road, leftover shops and reinvented restaurants, and buildings that are renovated and inviting — or just ruins to be viewed.

Whether you are seeking history, shopping, lost culture, recreation, scenic vistas, or dining in a century-old restaurant, this road offers it!

Your interest and support of this precious piece of American heritage will help to preserve its charm for future generations. Join today!

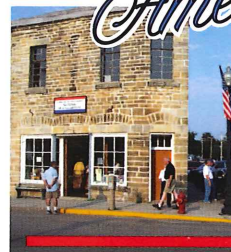
## OUR PURPOSE:

The Lincoln Highway Association (LHA) shall identify, preserve, interpret and improve access to the Lincoln Highway and its associated sites. It shall pursue the appropriate measures to prevent further deterioration, destruction or alteration of the remaining sections of the highway. It shall publicize and seek awareness of its goals and activities for preserving, promoting and developing the highway. The LHA shall facilitate research about the road and publish a magazine for articles of relevant news and activity. It shall work with local communities and businesses to promote heritage tourism along its corridor.

The LHA shall be exclusively charitable and educational within the interpretation of Section 501(c)(3) of the Internal Revenue Code.

**CONTRIBUTIONS TO THE LINCOLN HIGHWAY ASSOCIATION MAY BE TAX DEDUCTIBLE. PLEASE CHECK WITH YOUR TAX CONSULTANT.**

*Main Street Across America!*



REV 11/09

National Headquarters  
136 North Elm Street  
Franklin Grove, IL 61031  
815-456-3030

Hours: M - S, 10 to 4 p.m.  
Sun, noon to 4 p.m.  
(or by appointment)

[www.lincolnhighwayassoc.org](http://www.lincolnhighwayassoc.org)

# THE LINCOLN HIGHWAY ASSOCIATION

AMERICA'S FIRST COAST-TO-COAST PAVED ROAD

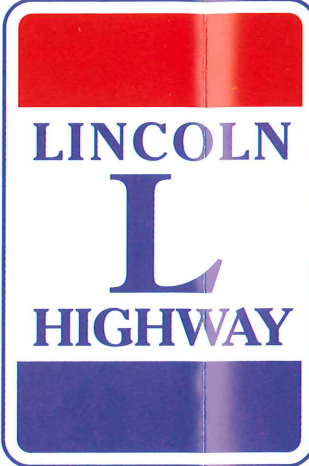
*Help Preserve and Promote the Road that Changed the Way America Traveled*

*Join Us!*





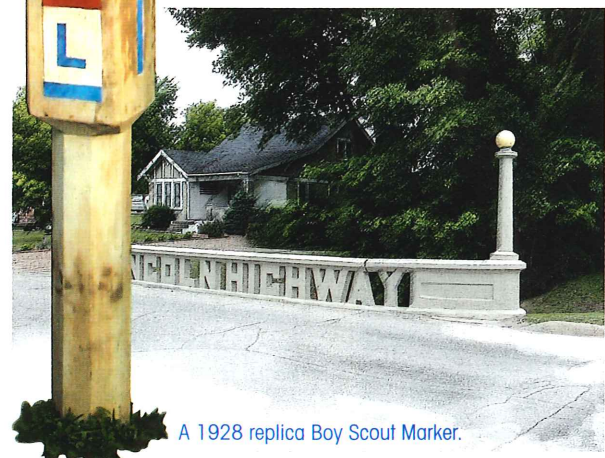
*Main Street Across America!*



Mifflin, Ohio...This scene is typical of small towns along the Lincoln Highway. —Photo by M. Hocker



Once called "Main Street Across America," this highway invigorated many smaller cities and towns. Recent road and bridge improvements in Clinton, Iowa pay tribute to the impact of the Lincoln Highway on their community. — Photo by Howard R. Green Company.



A 1928 replica Boy Scout Marker.



**FOR YOUR MEMBERSHIP...**

As a member of the association, you will receive **THE LINCOLN HIGHWAY FORUM**, a quarterly magazine containing feature articles about current activities and preservation efforts along the Lincoln Highway. You will also receive



a decal, a directory of our members and a replica of the original membership certificate from 1913.

**ATTEND OUR ANNUAL CONFERENCES**

A national Lincoln Highway Association conference is held annually in June in a city along the road. Each year the event is hosted by a different state chapter.

These conferences feature narrated bus tours of the host state, presentations by experts on the Lincoln Highway and related topics, and also include various social events and banquets.

**JOIN NOW!**

Help preserve the paths of the old highway and help re-establish its identity to tourists and locals, alike. Your support will also help fund the installation of historic and informational signs. Your membership also helps us gain more funding from state and federal entities and encourages designations of scenic byways and heritage corridors.

**LINCOLN HIGHWAY ASSOCIATION MEMBERSHIP APPLICATION**

Name \_\_\_\_\_ m m y y  
 Address \_\_\_\_\_  
 City, State, Zip \_\_\_\_\_  
 Home phone \_\_\_\_\_ Work Phone \_\_\_\_\_  
 Email \_\_\_\_\_ Fax \_\_\_\_\_

**CREDIT CARD INFORMATION**  
 VISA  MASTERCARD Exp. Date: \_\_\_\_\_  
 Name as it appears on card: \_\_\_\_\_  
 Cardholder address, if different from above: \_\_\_\_\_  
 Card Number: \_\_\_\_\_

We have committees that focus on activities like marketing, interpretive sites, markers, historic resources, government relations, awards, nominations and fund raising. If you would like to serve on a committee, please let us know where your interests lie:



Date: \_\_\_\_\_  
 New Member  
 Renewal

**State Affiliation:**

Members who live in Lincoln Highway states are automatically members of that state's chapter. Dues for additional chapter memberships are \$7 per year per state. Mark the appropriate box below:

- NY  IN  NE  UT
- NJ  IL  CO  NV
- PA  IA  WY  CA
- OH-WV  At Large

- Student - \$25
- Individual - \$45
- Nonprofit Org. - \$45
- City/Cnty/State Gov't - \$45
- Family - \$60
- Supporting - \$75
- Business - \$75
- Patron - \$150
- Corporate - \$150
- Life - \$1000 or more
- Additional Donation \$ \_\_\_\_\_

This association is exclusively charitable and educational within the interpretation of Section 501(c)(3) of the Internal Revenue Code.

Please remit payment to:  
**Lincoln Highway Association**  
 P.O. BOX 1075 Tooele, UT 84074-1075